



CAMPFIRE

TOWNHOMES

COME TOGETHER.



UNPLUG & UNWIND.







ENDLESS EXPLORATION.

Nestled alongside the idyllic Illecillewaet River and adjacent to the lush Revelstoke Green Belt, Campfire Townhomes offer a unique blend of comfort, nature, and adventure. This inviting community is designed for those who seek both tranquility and excitement in one of Canada's most breathtaking landscapes.



All renderings and images are only shown for illustration purposes only and are subject to change. E.&O.E.

COMMUNITY & CONNECTION.

At Campfire Townhomes, a true sense of community enhances the joy of living.

18 thoughtfully designed homes line a picturesque tree-lined street, creating an inviting atmosphere that encourages neighbourly connection and fosters friendships and shared experiences.

Communal spaces, including a resident garden, are perfect for sharing stories, growing together, and embracing the vibrant community spirit that defines Campfire Townhomes.

Experience a lifestyle where connection is key at Campfire Townhomes.



MILESTONES & MEMORIES.

Each townhome at Campfire is crafted with modern elegance and comfort in mind. Enjoy open-concept living spaces flooded with natural light, stylish kitchens equipped for culinary creations, and cozy bedrooms that promise restful nights.

Thoughtful design emphasizes room dimensions that comfortably accommodate your furniture, creating spaces that grow with you through life's milestone moments.

Whether you're seeking a weekend getaway or a year-round residence, our homes are your sanctuary in nature.





LOCATION IS EVERYTHING.

Central Revelstoke is more than just a beautiful location; it's a welcoming community that offers families a vibrant lifestyle filled with adventure and connection.

Endless Outdoor Adventures

Wake up to breathtaking mountain views and enjoy world-class big mountain recreation, or spend sunny days fishing, kayaking, or picnicking along the Illecillewaet and Columbia Rivers.

Family-Friendly Amenities

Access numerous parks, including Kovach Park, featuring playgrounds and sports fields, participate in seasonal festivals and farmers' markets, or benefit from reputable schools that foster a love for learning.

A Strong Sense of Community

Revelstoke boasts a friendly, close-knit atmosphere where neighbours become friends and children are secure to play and explore. Embrace a rich cultural scene filled with art, music, and a historic downtown filled with charming shops, cafés, and restaurants.



FLOORPLANS.

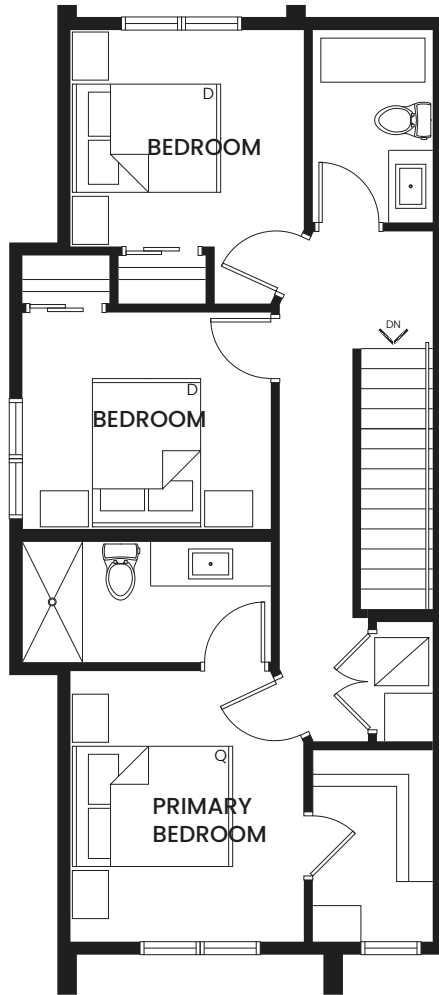
Spacious 2- and 3-bedroom townhomes, thoughtfully designed with the perfect blend of comfort and functionality.

Enjoy the convenience and security of your private garage and benefit from flexible living arrangements with legal secondary suites, perfect for guests, rental income, or multi-generational living.

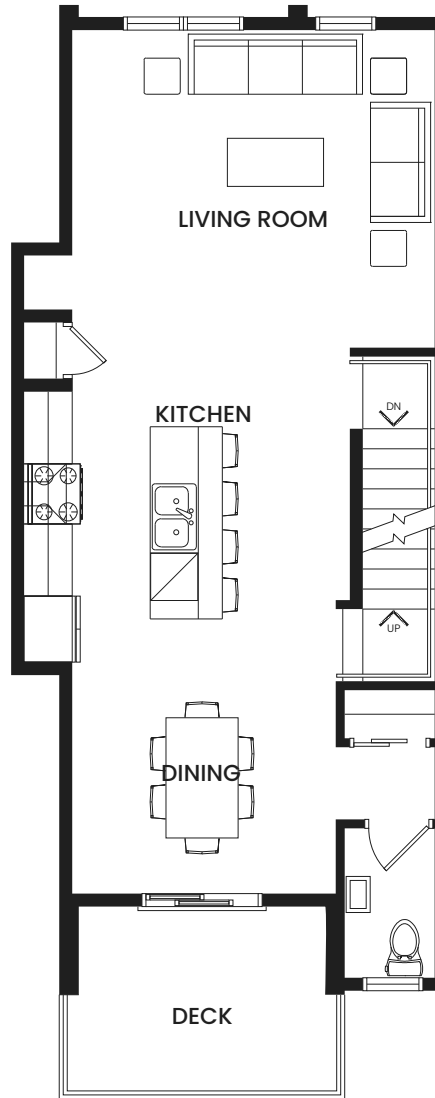
Navigate whatever life throws your way, ensuring your home adapts to your family's needs.

A

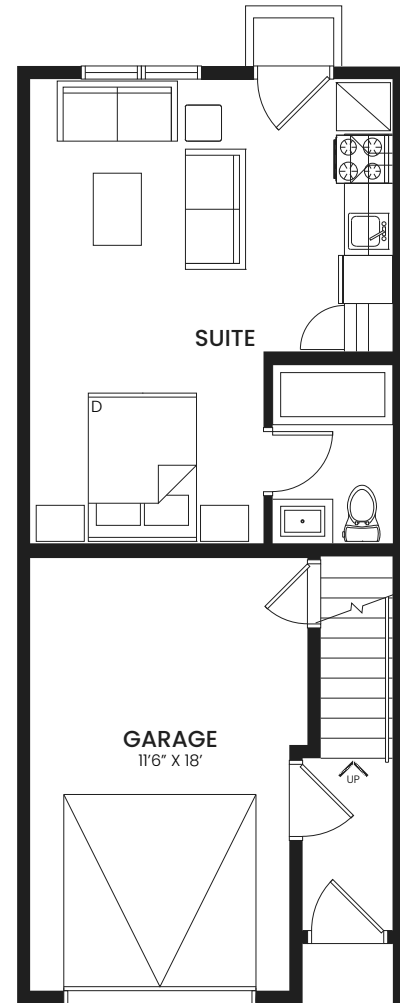
3 BED | 3.5 BATH
1658 SQ FT



UPPER FLOOR
660 SQ FT

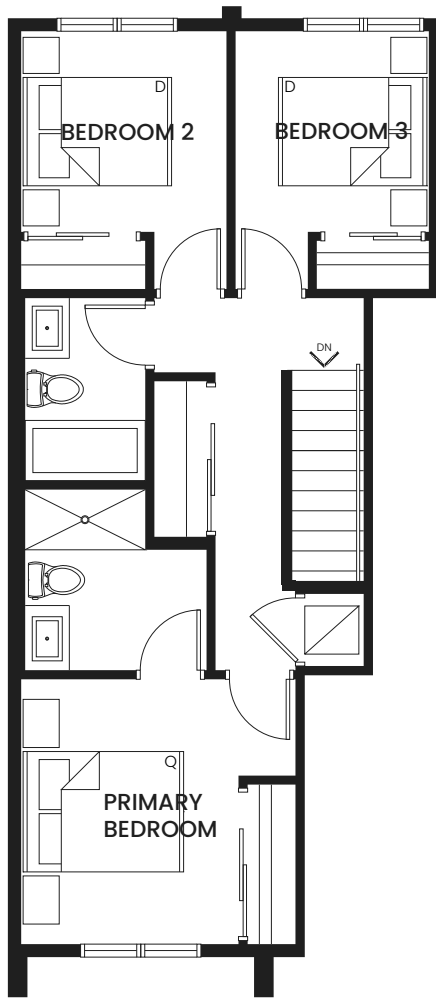


MAIN FLOOR
664 SQ FT

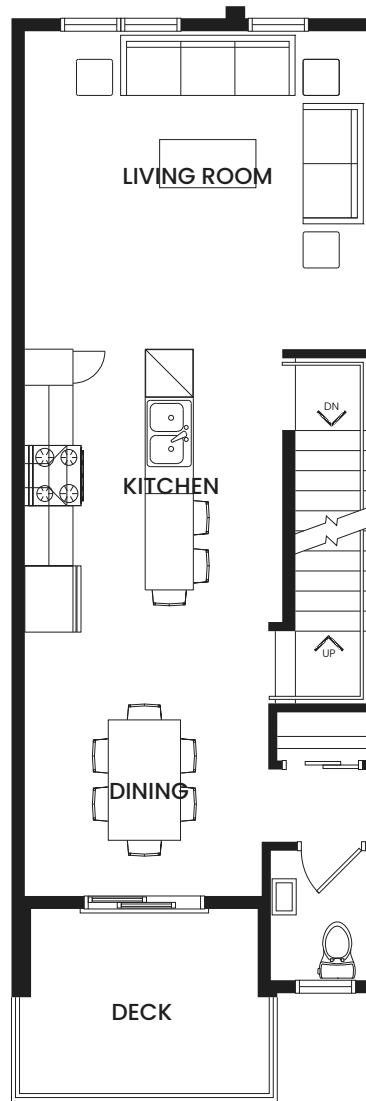


LOWER FLOOR
FOYER 31 SQ FT / SUITE 323 SQ FT

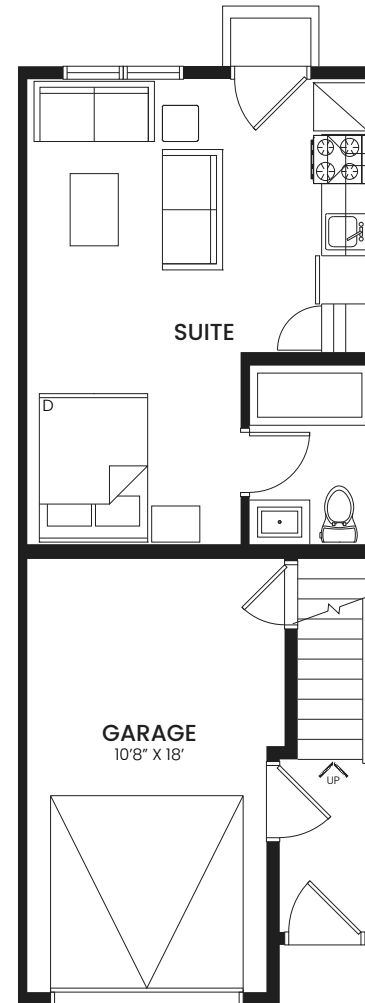
The Developer reserves the right to modify the floor plans. Square footages are based on architectural/real estate measurement standards and thus may differ from the actual surveyed unit areas as set forth on the registered condominium plan. E.&O.E.



UPPER FLOOR
583 SQ FT



MAIN FLOOR
573 SQ FT



LOWER FLOOR
FOYER 30 SQ FT / SUITE 303 SQ FT

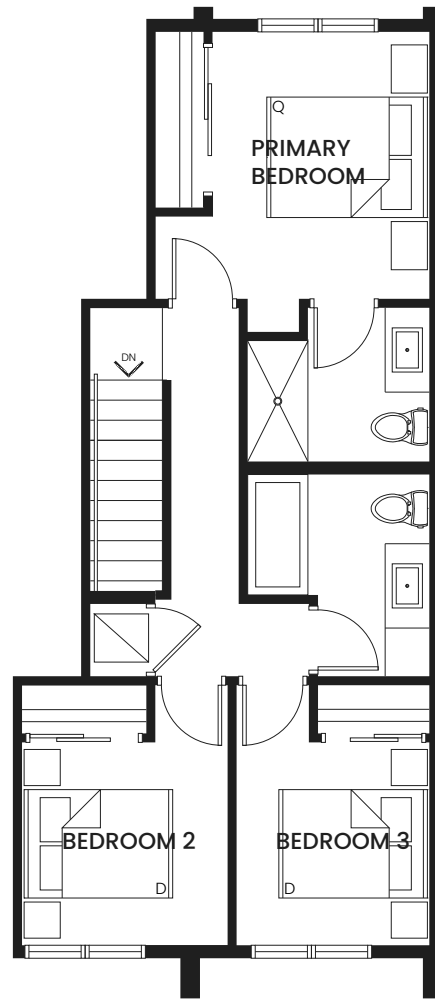
B

3 BED | 3.5 BATH
1489 SQ FT

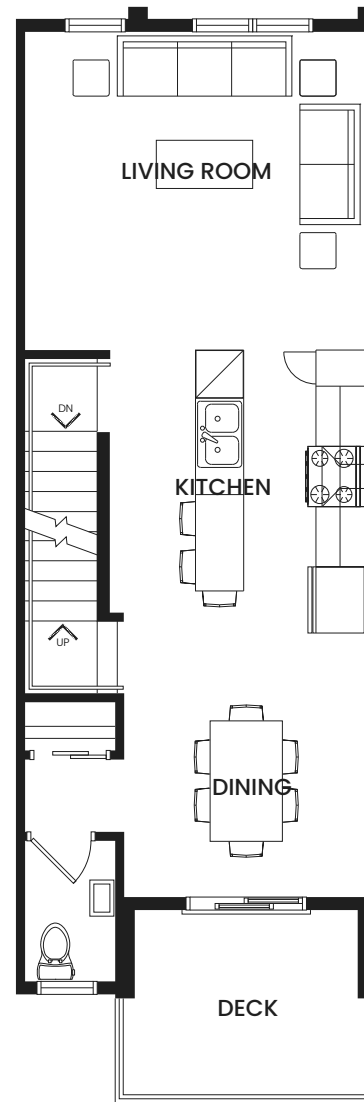
The Developer reserves the right to modify the floor plans. Square footages are based on architectural/real estate measurement standards and thus may differ from the actual surveyed unit areas as set forth on the registered condominium plan. E.&O.E.

C

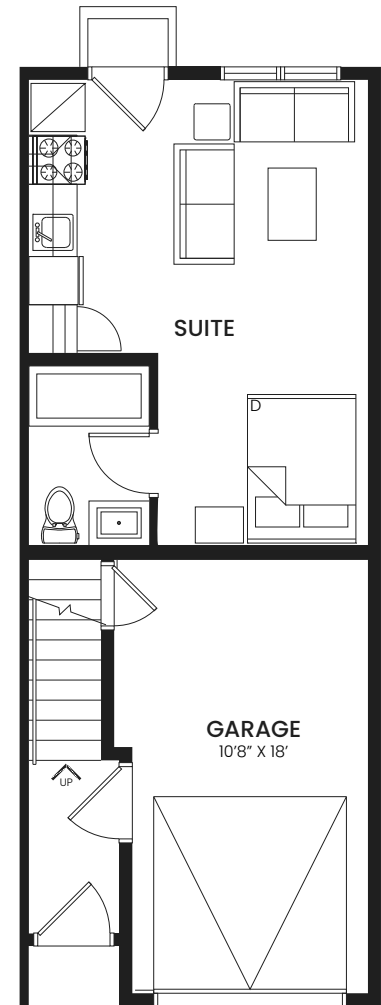
3 BED | 3.5 BATH
1489 SQ FT



UPPER FLOOR
583 SQ FT

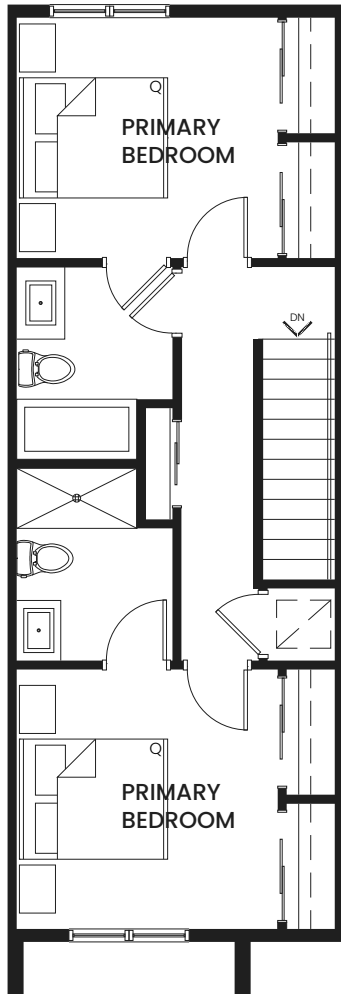


MAIN FLOOR
573 SQ FT

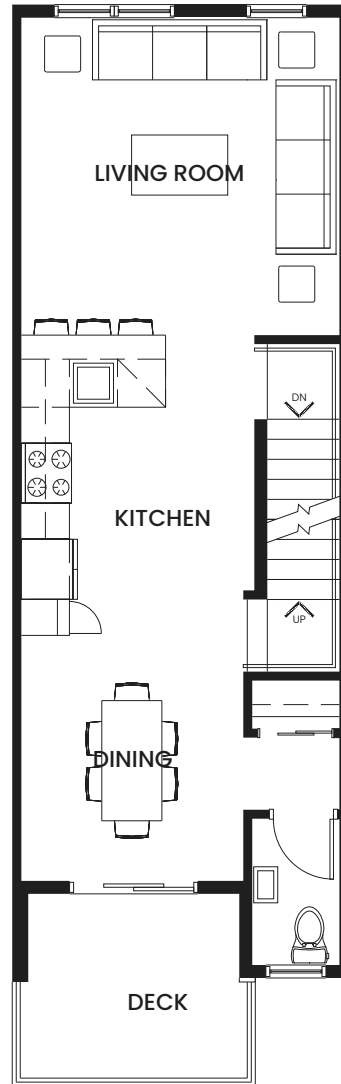


LOWER FLOOR
FOYER 30 SQ FT / SUITE 303 SQ FT

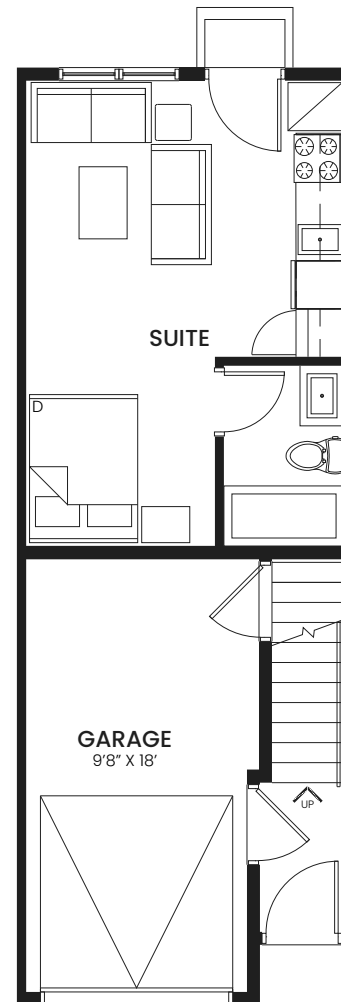
The Developer reserves the right to modify the floor plans. Square footages are based on architectural/real estate measurement standards and thus may differ from the actual surveyed unit areas as set forth on the registered condominium plan. E.&O.E.



UPPER FLOOR
546 SQ FT



MAIN FLOOR
533 SQ FT

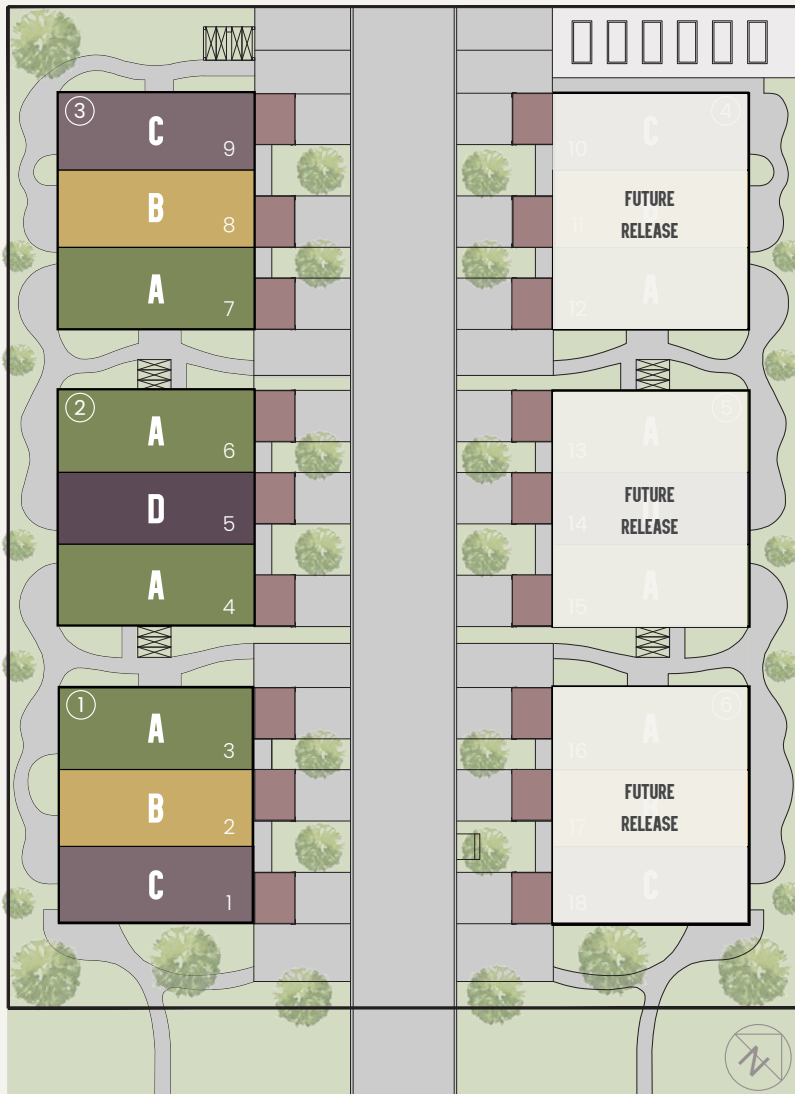


LOWER FLOOR
FOYER 28 SQ FT / SUITE 282 SQ FT

D

2 BED | 3.5 BATH
1389 SQ FT

The Developer reserves the right to modify the floor plans. Square footages are based on architectural/real estate measurement standards and thus may differ from the actual surveyed unit areas as set forth on the registered condominium plan. E.&O.E.



SIMPSON STREET

REVELSTOKE GREENBELT

ILLECILLEWAET RIVER





All renderings and images are only shown for illustration purposes only and are subject to change. E.&O.E.

SPECIFICATIONS.

A BETTER HOME

- 🔥 Pintrest-worthy interiors by Carrara Design Group are inspired by the natural landscape with warm and inviting materials, and lasting finishes.
- 🔥 Open concept floorplans provide a seamless transition between rooms and
- 🔥 9' foot ceiling on the main living and lower levels creates voluminous living spaces
- 🔥 Heat and cooling are provided by a high-efficiency forced air furnace with an air conditioning unit for maximum air movement and home comfort.
- 🔥 Durable plank flooring through the main living areas and plush carpet with thick underlay throughout the upper floor bedroom, hallways and stairs.
- 🔥 Private outdoor patios for every home and a community garden offer a communal gathering space to get to know your neighbours
- 🔥 Oversized indoor garages with 9-foot ceilings and ample room for gear storage

BATHROOMS

- 🔥 Main baths are equipped with deep soaker bathtubs with ceramic tiled walls
- 🔥 Primary bathrooms offer a tiled shower with custom glass doors
- 🔥 Decorative vanity lighting and gold faucets and custom mirrors
- 🔥 Porcelain tiled flooring

KITCHENS

- 🔥 Modern thin profile cabinetry with gold accents and soft close cabinets and drawers
- 🔥 Quartz stone tops and full height tile backsplash
- 🔥 Sleek stainless steel appliances including refrigerator, dishwasher, slide-in electric range and hood fan microwave combination
- 🔥 Feature lighting above the breakfast bar, kitchen island and dining room

PEACE OF MIND

- 🔥 Homeowner peace of mind through a comprehensive new home warranty.
 - 🔥 2 Years for materials and labour
 - 🔥 5 Years for building envelope
 - 🔥 10 Years for structural defects
- 🔥 Wood frame construction with engineered subfloors and fully insulated party walls with air barrier designed to eliminate noise transference
- 🔥 High-performance dual-glazed windows and doors to meet energy efficiency requirements
- 🔥 Overhead garage doors with keypad entries



411 Simpson Street, Revelstoke BC

CAMPFIRETOWNHOMES.COM

Brad Van De Walle

Call or Text: 403-888-7653
brad@greateryycgroup.com

Russell Mortlock

Call or Text: 778-392-7238
russell@mortlockrealestate.com

BOXFORT
HOMES

This is not an offering for sale and such an offering can only be made after filing a disclosure statement. E.&O.E.



MORTLOCK-WILK
REAL ESTATE GROUP

